



LTL NUMBER: 05939

DATE: 06-19-2001

PREPARED FOR: GVA LIGHTING

CATALOG NUMBER: FA132 WITH PMMA DIFFUSER

LUMINAIRE: MOLDED POLYCARBONATE HOUSING, FORMED WHITE ENAMEL STEEL

REFLECTOR, CLEAR PATTERNED ACRYLIC LENS.

LAMP: ONE PHILIPS F32T8/TL741 RATED AT 2850 LUMENS.

BALLAST: ONE MAGNETEK B232I120RH-A

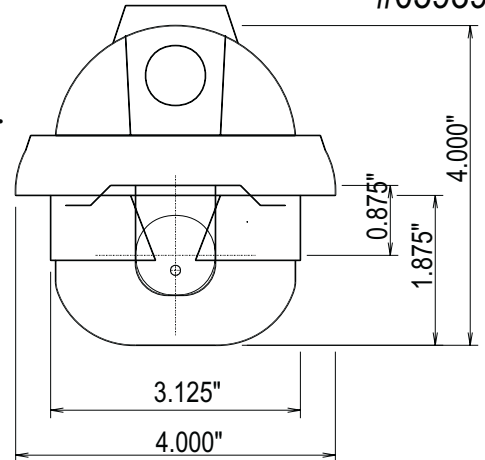
MOUNTING: SURFACE

LUMEN TO CANDELA RATIO USED = 9.18

TOTAL INPUT WATTS = 35.4 AT 120.0 VOLTS

THE 0 DEGREE PLANE IS PARALLEL WITH THE LAMPS.

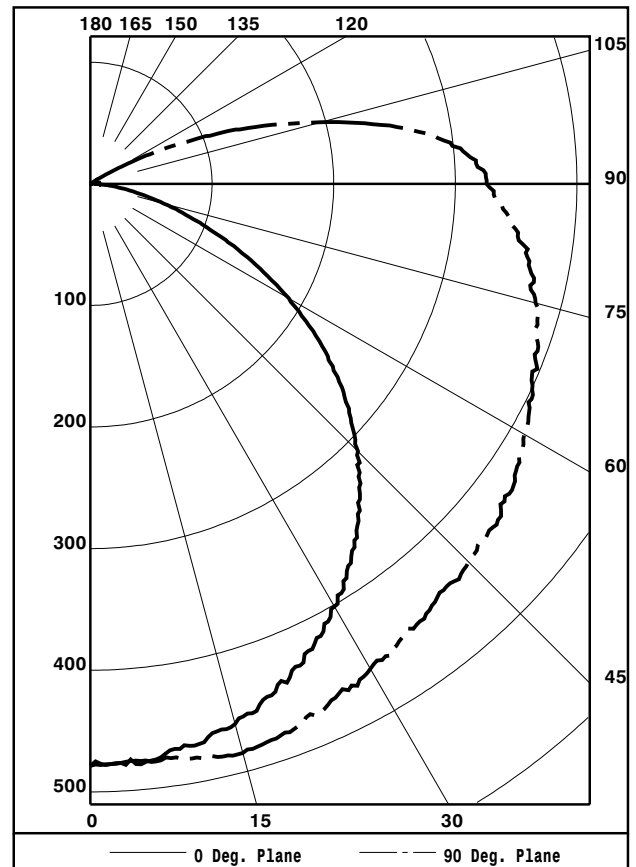
#05939



CANDELA DISTRIBUTION						FLUX
	0.0	22.5	45.0	67.5	90.0	
0	478	478	478	478	478	
5	479	477	481	477	476	45
15	460	463	474	477	485	134
25	424	439	457	465	469	209
35	374	396	422	443	452	263
45	311	339	382	422	440	294
55	233	270	347	405	426	302
65	142	202	309	377	401	287
75	62	145	269	352	379	261
85	16	104	235	320	347	228
90	4	87	216	299	326	
95	8	62	192	278	308	185
105	1	10	85	166	196	96
115	0	0	6	48	72	25
125	0	0	0	0	0	1
135	0	0	0	0	0	0
145	0	0	0	0	0	0
155	0	0	0	0	0	0
165	0	0	0	0	0	0
175	0	0	0	0	0	0
180	0	0	0	0	0	0

ZONAL	LUMEN	SUMMARY		
ZONE	LUMENS	%LAMP	%FIXT	
0- 30	388	13.6	16.6	
0- 40	650	22.8	27.9	
0- 60	1246	43.7	53.5	
0- 90	2022	71.0	86.8	
90-120	306	10.7	13.1	
90-130	307	10.8	13.2	
90-150	307	10.8	13.2	
90-180	307	10.8	13.2	
0-180	2329	81.7	100.0	

TOTAL LUMINAIRE EFFICIENCY: 81.7%
 TOTAL REFLECTANCE OF PAINT: 87.0%
 CIE TYPE: SEMI-DIRECT
 PLANE: 0-DEG 90-DEG
 SPACING CRITERIA: 1.2 1.5



TESTED BY HERSCHEL SCHRECK
 CHECKED BY MIKE GRATHER



LUMINAIRE TESTING LABORATORY, INC.



905 Harrison Street · Allentown, PA 18103 · (610) 770-1044 · Fax (610) 770-8912 · www.LuminaireTesting.com

LTL NUMBER: 05939

DATE: 06-19-2001

PREPARED FOR: GVA LIGHTING

COEFFICIENTS OF UTILIZATION - ZONAL CAVITY METHOD
EFFECTIVE FLOOR CAVITY REFLECTANCE 0.20

Table with 19 columns (RC, RW, 80, 70, 50, 30, 10, 0) and 11 rows (0-10) showing utilization coefficients.

PLANE: 0-DEG 90-DEG
LUMINOUS LENGTH: 49.750 3.125
HEIGHT OF SIDE: 1.875 1.875

LUMINANCE IN CANDELA PER SQUARE METER

Table with 4 columns (ANGLE IN DEG, AVERAGE 0-DEG, AVERAGE 45-DEG, AVERAGE 90-DEG) and 6 rows (0, 45, 55, 65, 75, 85) showing luminance values.



LTL NUMBER: 05939
PREPARED FOR: GVA LIGHTING

DATE: 06-19-2001

CANDELA DISTRIBUTION

Table with 6 columns representing candela values at different angles (0.0, 22.5, 45.0, 67.5, 90.0) for various beam diameters (0 to 180).

ZONAL LUMEN SUMMARY

Table with 2 columns representing lumen values for various beam diameter zones (0-5 to 175-180).

THIS TEST WAS CONDUCTED USING RELATIVE PHOTOMETRY TECHNIQUES ACCORDING TO STANDARD IESNA PROCEDURES. THE USER MUST THEREFORE USE CAUTION IN THE FOLLOWING SITUATIONS: 1) THIS TEST WAS PERFORMED USING A SPECIFIC BALLAST/LAMP COMBINATION. EXTRAPOLATION OF THESE DATA FOR OTHER BALLAST/LAMP COMBINATIONS MAY PRODUCE ERRONEOUS RESULTS. 2) ACCORDING TO IESNA PROCEDURES, THE BALLAST(S) AND LAMP(S) ARE PRESUMED TO PRODUCE 100% OF RATED OUTPUT. AN APPROPRIATE BALLAST FACTOR MUST BE APPLIED TO THE LUMEN OUTPUT RATINGS AND LUMINOUS INTENSITY VALUES GIVEN. 3) THIS TEST WAS CONDUCTED IN A CONTROLLED LABORATORY ENVIRONMENT WHERE THE AMBIENT TEMPERATURE WAS HELD AT 25°C ±1°C. FIELD PERFORMANCE MAY DIFFER PARTICULARLY IN REGARDS TO CHANGE IN LUMINOUS OUTPUT AS A RESULT OF DIFFERENCE IN AMBIENT TEMPERATURE AND METHOD OF MOUNTING THE LUMINAIRE.