



LTL NUMBER: 05942

DATE: 06-19-2001

PREPARED FOR: GVA LIGHTING

CATALOG NUMBER: FA217 WITH PC DIFFUSER

LUMINAIRE: MOLDED POLYCARBONATE HOUSING, FORMED WHITE ENAMEL STEEL REFLECTOR, FROSTED LINEAR PRISMATIC POLYCARBONATE LENS.

LAMPS: TWO PHILIPS F17T8/TL741 RATED AT 1350 LUMENS EACH.

BALLAST: ONE MAGNETEK B232I120RH-A

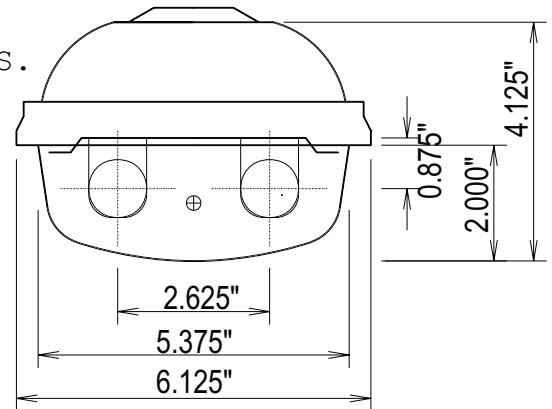
MOUNTING: SURFACE

#05942

LUMEN TO CANDELA RATIO USED = 9.17

TOTAL INPUT WATTS = 31.9 AT 120.0 VOLTS

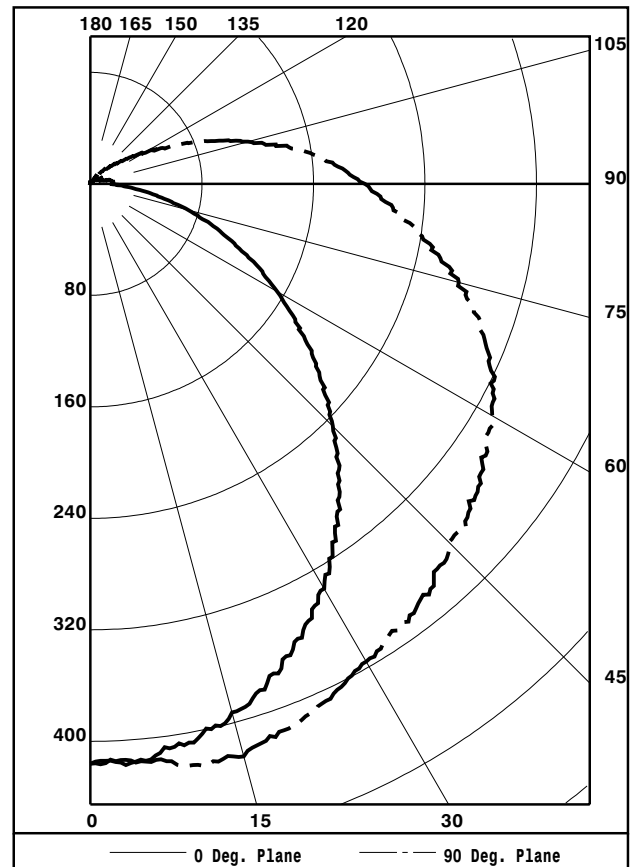
THE 0 DEGREE PLANE IS PARALLEL WITH THE LAMPS.



CANDELA DISTRIBUTION						FLUX
	0.0	22.5	45.0	67.5	90.0	
0	416	416	416	416	416	
5	415	416	415	415	416	40
15	393	399	414	421	425	116
25	359	369	391	402	408	178
35	306	326	356	378	388	220
45	246	273	315	354	364	241
55	182	215	276	325	342	243
65	125	163	232	295	317	227
75	72	117	191	252	274	194
85	28	76	146	200	218	150
90	15	62	129	179	197	
95	18	53	113	159	174	112
105	9	26	67	102	117	69
115	6	12	34	56	65	34
125	0	7	16	25	32	15
135	0	3	6	12	13	5
145	0	0	0	7	8	1
155	0	0	0	0	0	0
165	0	0	0	0	0	0
175	0	0	0	0	0	0
180	0	0	0	0	0	0

ZONAL LUMEN SUMMARY			
ZONE	LUMENS	%LAMP	%FIXT
0- 30	333	12.4	18.1
0- 40	554	20.5	30.0
0- 60	1038	38.4	56.2
0- 90	1608	59.6	87.1
90-120	216	8.0	11.7
90-130	231	8.5	12.5
90-150	237	8.8	12.9
90-180	237	8.8	12.9
0-180	1845	68.3	100.0

TOTAL LUMINAIRE EFFICIENCY: 68.3%
TOTAL REFLECTANCE OF PAINT: 85.5%
CIE TYPE: SEMI-DIRECT
PLANE: 0-DEG 90-DEG
SPACING CRITERIA: 1.2 1.4



TESTED BY HERSCHEL SCHRECK
CHECKED BY MIKE GRATHER



LUMINAIRE TESTING LABORATORY, INC.



905 Harrison Street · Allentown, PA 18103 · (610) 770-1044 · Fax (610) 770-8912 · www.LuminaireTesting.com

LTL NUMBER: 05942

DATE: 06-19-2001

PREPARED FOR: GVA LIGHTING

COEFFICIENTS OF UTILIZATION - ZONAL CAVITY METHOD
EFFECTIVE FLOOR CAVITY REFLECTANCE 0.20

Table with 18 columns (RC, RW, 80, 70, 50, 30, 10, 0) and 11 rows (0-10) showing utilization coefficients.

PLANE: 0-DEG 90-DEG
LUMINOUS LENGTH: 25.625 5.375
HEIGHT OF SIDE: 2.000 2.000

Table with 4 columns (ANGLE IN DEG, AVERAGE 0-DEG, AVERAGE 45-DEG, AVERAGE 90-DEG) and 6 rows (0, 45, 55, 65, 75, 85) showing luminance values.



LTL NUMBER: 05942
PREPARED FOR: GVA LIGHTING

DATE: 06-19-2001

CANDELA DISTRIBUTION

Table with 6 columns representing candela values at angles 0.0, 22.5, 45.0, 67.5, 90.0. Values range from 416 down to 0.

ZONAL LUMEN SUMMARY

Table with 2 columns representing zonal lumen values for angular ranges from 0-5 to 175-180. Values range from 10 down to 0.

THIS TEST WAS CONDUCTED USING RELATIVE PHOTOMETRY TECHNIQUES ACCORDING TO STANDARD IESNA PROCEDURES. THE USER MUST THEREFORE USE CAUTION IN THE FOLLOWING SITUATIONS: 1) THIS TEST WAS PERFORMED USING A SPECIFIC BALLAST/LAMP COMBINATION. EXTRAPOLATION OF THESE DATA FOR OTHER BALLAST/LAMP COMBINATIONS MAY PRODUCE ERRONEOUS RESULTS. 2) ACCORDING TO IESNA PROCEDURES, THE BALLAST(S) AND LAMP(S) ARE PRESUMED TO PRODUCE 100% OF RATED OUTPUT. AN APPROPRIATE BALLAST FACTOR MUST BE APPLIED TO THE LUMEN OUTPUT RATINGS AND LUMINOUS INTENSITY VALUES GIVEN. 3) THIS TEST WAS CONDUCTED IN A CONTROLLED LABORATORY ENVIRONMENT WHERE THE AMBIENT TEMPERATURE WAS HELD AT 25°C ±1°C. FIELD PERFORMANCE MAY DIFFER PARTICULARLY IN REGARDS TO CHANGE IN LUMINOUS OUTPUT AS A RESULT OF DIFFERENCE IN AMBIENT TEMPERATURE AND METHOD OF MOUNTING THE LUMINAIRE.