



LTL NUMBER: 05941

DATE: 06-19-2001

PREPARED FOR: GVA LIGHTING

CATALOG NUMBER: FA217 WITH PMMA DIFFUSER

LUMINAIRE: MOLDED POLYCARBONATE HOUSING, FORMED WHITE ENAMEL STEEL REFLECTOR, CLEAR PATTERNED ACRYLIC LENS.

LAMPS: TWO PHILIPS F17T8/TL741 RATED AT 1350 LUMENS EACH.

BALLAST: ONE MAGNETEK B232I120RH-A

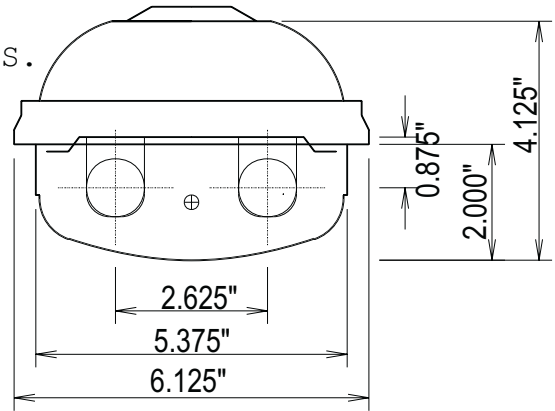
MOUNTING: SURFACE

LUMEN TO CANDELA RATIO USED = 9.17

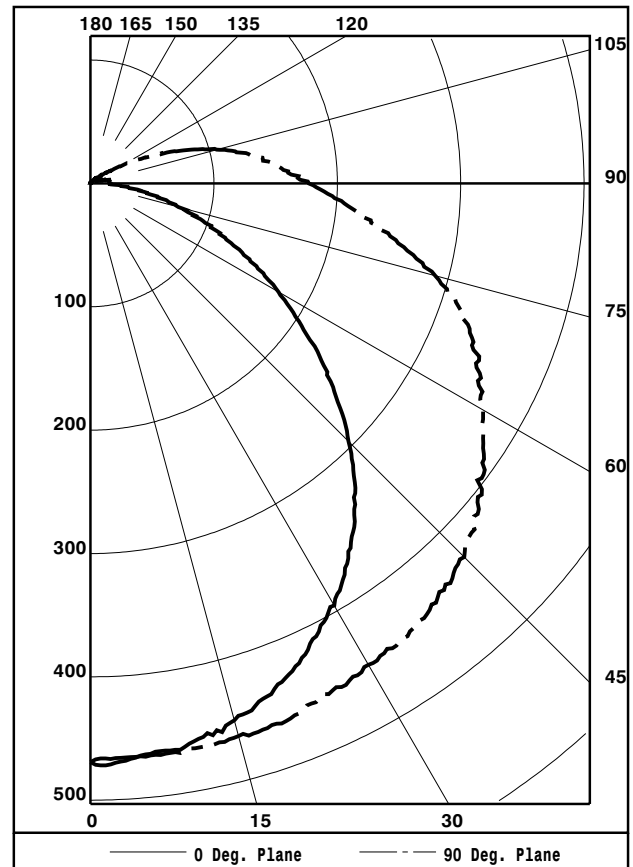
TOTAL INPUT WATTS = 32.0 AT 120.0 VOLTS

THE 0 DEGREE PLANE IS PARALLEL WITH THE LAMPS.

#05941



CANDELA DISTRIBUTION						FLUX
0.0	22.5	45.0	67.5	90.0		
0	469	469	469	469	469	45
5	466	467	468	466	466	130
15	450	455	460	465	464	202
25	417	425	439	451	457	256
35	364	380	410	434	448	283
45	296	320	370	410	428	278
55	214	250	318	370	389	250
65	137	181	262	325	345	209
75	74	124	210	274	289	148
85	24	76	153	195	210	100
90	14	58	125	164	177	59
95	16	43	101	140	154	24
105	11	18	54	92	106	7
115	8	6	19	41	50	3
125	0	6	7	13	14	0
135	0	2	4	6	6	0
145	0	0	0	0	0	0
155	0	0	0	0	0	0
165	0	0	0	0	0	0
175	0	0	0	0	0	0
180	0	0	0	0	0	0



ZONAL	LUMEN	SUMMARY		
ZONE	LUMENS	%LAMP	%FIXT	
0- 30	377	14.0	18.9	
0- 40	633	23.4	31.7	
0- 60	1193	44.2	59.9	
0- 90	1800	66.7	90.3	
90-120	183	6.8	9.2	
90-130	190	7.0	9.5	
90-150	193	7.1	9.7	
90-180	193	7.1	9.7	
0-180	1993	73.8	100.0	

TOTAL LUMINAIRE EFFICIENCY: 73.8%
 TOTAL REFLECTANCE OF PAINT: 85.5%
 CIE TYPE: DIRECT
 PLANE: 0-DEG 90-DEG
 SPACING CRITERIA: 1.2 1.5

TESTED BY HERSCHEL SCHRECK
 CHECKED BY MIKE GRATHER



LUMINAIRE TESTING LABORATORY, INC.



905 Harrison Street · Allentown, PA 18103 · (610) 770-1044 · Fax (610) 770-8912 · www.LuminaireTesting.com

LTL NUMBER: 05941

DATE: 06-19-2001

PREPARED FOR: GVA LIGHTING

COEFFICIENTS OF UTILIZATION - ZONAL CAVITY METHOD
EFFECTIVE FLOOR CAVITY REFLECTANCE 0.20

Table with 19 columns (RC, RW, 80, 70, 50, 30, 10, 0) and 11 rows of utilization coefficients.

PLANE: 0-DEG 90-DEG
LUMINOUS LENGTH: 25.625 5.375
HEIGHT OF SIDE: 2.000 2.000

LUMINANCE IN CANDELA PER SQUARE METER
ANGLE AVERAGE AVERAGE AVERAGE
IN DEG 0-DEG 45-DEG 90-DEG
0 5278. 5278. 5278.
45 4443. 4746. 5204.
55 3845. 4538. 5203.
65 3186. 4363. 5308.
75 2549. 4358. 5428.
85 1694. 4393. 5270.



LTL NUMBER: 05941
PREPARED FOR: GVA LIGHTING

DATE: 06-19-2001

CANDELA DISTRIBUTION

Table with 6 columns representing candela values at angles 0.0, 22.5, 45.0, 67.5, and 90.0 degrees. Values range from 469 at 0 degrees to 0 at 180 degrees.

ZONAL LUMEN SUMMARY

Table with 2 columns representing zonal lumen values for various angle ranges from 0-5 to 175-180 degrees. Values range from 11.0 to 109.0.

THIS TEST WAS CONDUCTED USING RELATIVE PHOTOMETRY TECHNIQUES ACCORDING TO STANDARD IESNA PROCEDURES. THE USER MUST THEREFORE USE CAUTION IN THE FOLLOWING SITUATIONS: 1) THIS TEST WAS PERFORMED USING A SPECIFIC BALLAST/LAMP COMBINATION. EXTRAPOLATION OF THESE DATA FOR OTHER BALLAST/LAMP COMBINATIONS MAY PRODUCE ERRONEOUS RESULTS. 2) ACCORDING TO IESNA PROCEDURES, THE BALLAST(S) AND LAMP(S) ARE PRESUMED TO PRODUCE 100% OF RATED OUTPUT. AN APPROPRIATE BALLAST FACTOR MUST BE APPLIED TO THE LUMEN OUTPUT RATINGS AND LUMINOUS INTENSITY VALUES GIVEN. 3) THIS TEST WAS CONDUCTED IN A CONTROLLED LABORATORY ENVIRONMENT WHERE THE AMBIENT TEMPERATURE WAS HELD AT 25°C ±1°C. FIELD PERFORMANCE MAY DIFFER PARTICULARLY IN REGARDS TO CHANGE IN LUMINOUS OUTPUT AS A RESULT OF DIFFERENCE IN AMBIENT TEMPERATURE AND METHOD OF MOUNTING THE LUMINAIRE.